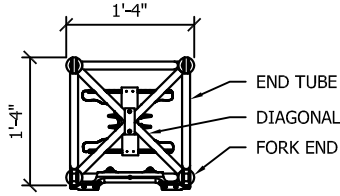
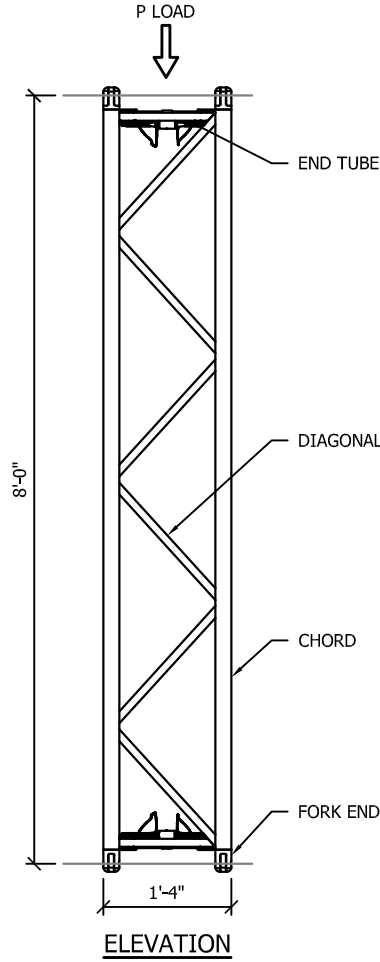


ISOMETRIC



END VIEW



ELEVATION

PARTS LIST	
DIAGONALS	1"Øx $\frac{1}{8}$ " TUBE
CHORDS	2"Øx $\frac{1}{8}$ " TUBE
END TUBE	1"Øx $\frac{1}{8}$ " TUBE
FORK ENDS	ALUMINUM

NOTES:
 1. ALL ALUMINUM IS 6082-T6 OR 6061-T6
 2. ALL WELD FILLER IS 4043

CHRISTIE LITES 16"x16" B-TYPE TRUSS TOWER AXIAL CAPACITY TABLE		
COLUMN LENGTH	AXIAL LOAD (LBS) K = 1.0*	AXIAL LOAD (LBS) K = 2.1**
8'-0"	16,340 lbs	16,340 lbs
16'-0"	16,340 lbs	15,640 lbs
24'-0"	16,340 lbs	6,950 lbs
32'-0"	16,340 lbs	3,910 lbs
40'-0"	11,030 lbs	2,500 lbs

* ROTATION FREE AT BOTH ENDS AND TRANSLATION FIXED (TYPICAL COLUMN)
 ** ONE END IS FREE AND THE OTHER END IS FIXED (CANTILEVER COLUMN)

TABLE USAGE NOTES:

1. ALL CAPACITIES ASSUME NO OTHER SHEAR, FLEXURE, OR TORSIONAL FORCES ARE APPLIED TO THE COLUMN.
2. IF A POINT IS "HELD IN POSITION, BUT NOT RESTRAINED IN DIRECTION" THEN IT CAN BE CONSIDERED AS "PINNED".
3. IF A POINT IS "HELD IN POSITION AND RESTRAINED IN DIRECTION", THEN IT CAN BE CONSIDERED AS "FIXED".
4. ALLOWABLE LOADS BASED ON 2020 ALUMINUM DESIGN MANUAL.

<h1>CHRISTIE LITES B-TYPE TRUSS</h1>	 10091 Mosteller Lane Cincinnati, OH 45069 513 851 1223	VERTICAL LOADING TRUSS TABLE	
		DATE: 8/6/2024	<h1>ST1.1</h1>
		CRE PROJECT NO: 24.915.06	
		DRAWN BY: BJH/MAL	