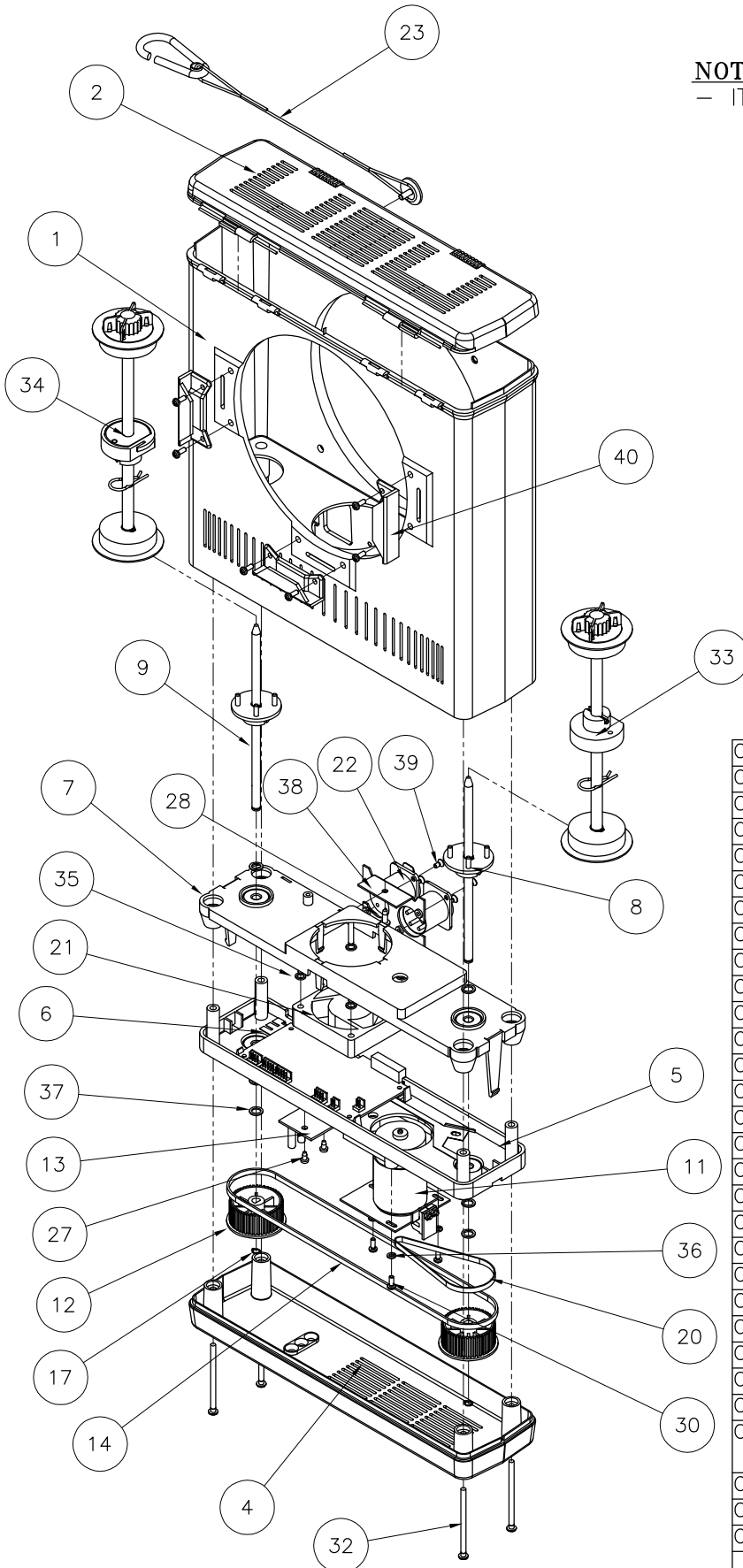


CHROMA-Q ORIGINAL

NOTE:

- ITEM 40 -KIT BARN DOOR- IS OPTIONAL



CQ1-D-40	KIT BARN DOOR	1
CQ1-D-39	SCREW M3x6 FH PLPS Bik	4
CQ1-D-38	BRACKET XLR	1
CQ1-D-37	WASHER FLAT 0.260"ID Ni	6
CQ1-D-36	WASHER LOCK M3 Bik	3
CQ1-D-35	ORING 5mm RUBBER Bik	4
CQ1-D-34	TAKE UP REEL SPRING (GREY)	1
CQ1-D-33	TAKE UP REEL FIXED (BLACK)	1
CQ1-D-32	SCREW M4x60 PH PLPS Zn	4
CQ1-D-30	SCREW M3x8 PH PLPS Bik	3
CQ1-D-28	SCREW M3.5x10 PH PLPS Zn Plastite	1
CQ1-D-27	SCREW M3x6 PH PLPS Zn Plastite	2
CQ1-D-25	4 WIRE JUMPER	1
CQ1-D-23	SAFETY CHAIN ASSY KIT	1
CQ1-D-22	XLR'S ASSY	1
CQ1-D-21	FAN ASSY 60x60	1
CQ1-D-20	BELT TIMING T2.5-200	1
CQ1-D-17	RET RING EXT 6mm	4
CQ1-D-14	BELT TIMING T2.5-540	1
CQ1-D-13	PCB LED	1
CQ1-D-12	PULLEY TIMING BELT 48TEETH	2
CQ1-D-11	MOTOR ASSY	1
CQ1-D-09	DRIVEN SHAFT ASSY (GREY)	1
CQ1-D-08	DRIVE SHAFT ASSY (BLACK)	1
CQ1-D-07	FAN SHELF C/W BEARINGS	1
CQ1-D-06	PCB MAIN	1
CQ1-D-05	MOTOR PLATE C/W STATIC PLATE & BEARINGS	1
CQ1-D-04	BASE	1
CQ1-D-02	LID W/ LATCHES AND HINGE PIN	1
CQ1-D-01	HOUSING	1
ORDER#	DESCRIPTION	QTY
Parts List		