

THE ONE ATMOSPHERIC GENERATOR Touring Cradle

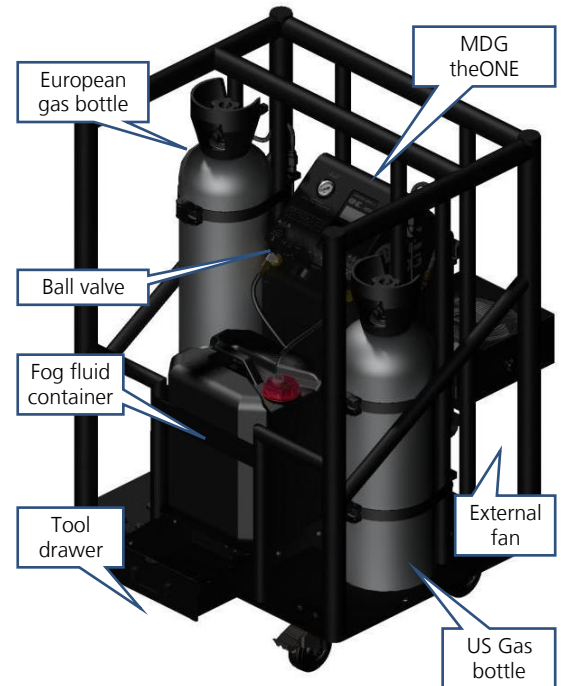
Installation

The MDG **theONE** Touring comes ready to use.

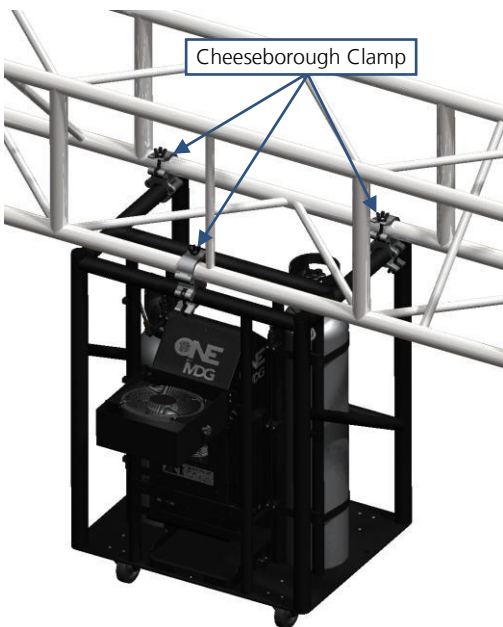
- Install the gas bottles, if they are not already in the cradle
 - Maximum bottle diameter: 205 mm (8")
 - Maximum bottle height: 940 mm (37"), including protection cap
- Connect **both** bottles to the gas inlet flexible braided hoses
- Open the gas bottles, and check the gauge, on top of the generator, to verify there is enough pressure (Pressure > 690 kPa (6.9 bar) /100 psi)
- Replace the seal fog fluid container cap with the cap equipped with the liquid line and the vent. Keep seal cap for future use
- Insert the fluid line in the fluid input fitting
- Connect the data wiring (DMX, RDM or Network), if you want to use remote control
- Plug the power cord (100–250 VAC, 50/60 Hz, 1480 W)

The MDG **theONE** Touring is now ready to be used.

... For further details, please read the **Operating Guide**.



Rigging the MDG theONE Touring



We recommend using **three** T57100 Series Cheeseborough clamp from Doughty Engineering with a **Safety Work Load of 750 kg (1650 lbs)** per clamp

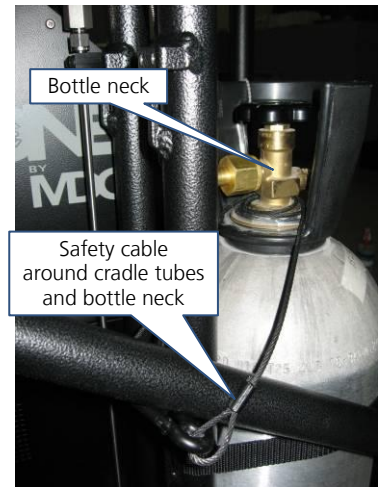
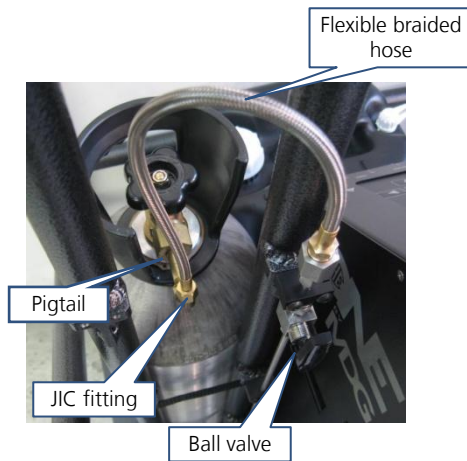
Stacking the MDG theONE Touring



We recommend using **three** T57000 Series Half Cheeseborough from Doughty Engineering with a **Safety Work Load of 750 kg (1650 lbs)** per clamp.

Do not stack more than two (2) cradles.

Gas bottle

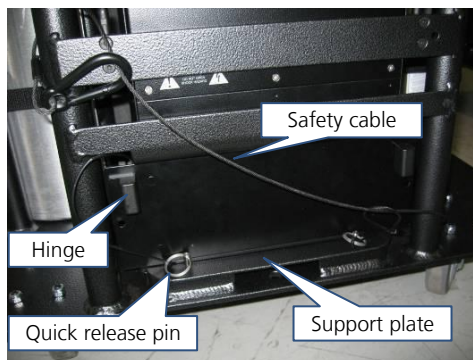


Fluid container



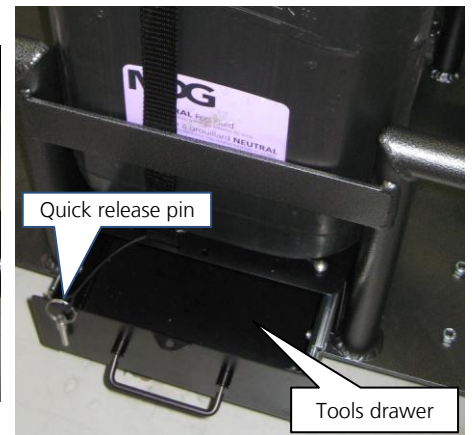
External fan during transportation

Be careful with the DMX-3 cable



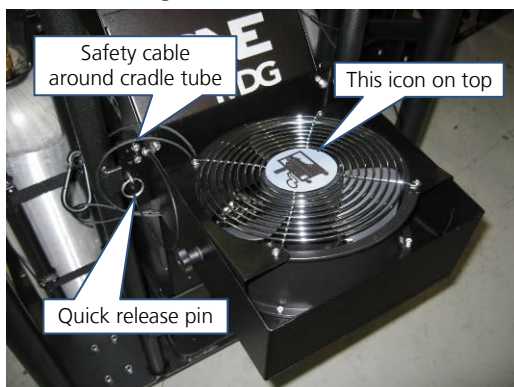
Tool drawer

DO NOT FORGET the quick release pin when rigging or during transportation



External fan Downward dispersion

Do not forget to connect the DMX-3 cable



External fan Upward dispersion

Do not forget to connect the DMX-3 cable

